

P.O. Box 67981, Los Angeles, CA 90067 Tel: (310) 274-3169



**Our model garden teaches companion kitchen gardening
and crop rotation, making an excellent lesson
for efficient land use on small plots.**

DIRECTORS

Stefanie Powers
Don Hunt
Iris Breidenbend Hunt
Tom Mankiewicz
Julian McKeand



P.O. Box 67981, Los Angeles, California 90067
Telephone: (310) 274-3169
Fax: (310) 274-7705
Website: <http://www.whwf.org>
email: mail@whwf.org

Dear Friends,

The long awaited rains have come and the countryside is digesting the water rapidly. The results of the rain are seen everywhere and they are not welcome in the areas of agriculture and electric power. Kenya's power source is largely hydro-electric and the critically low levels of water in the rivers and dams brought the turbines to a screeching halt causing great deprivation to the infrastructure. Now we can momentarily rejoice and look at a more positive future if only short term.

We continue to experience pressure on the animal population exasperated by an increase in 'bush meat' influenced by the active bush meat trade in neighboring Uganda, Burundi and Rwanda. In those countries, bush meat includes and indeed features primates, both the lesser and the greater. With all we know now about DNA, eating monkey, a chimpanzee or a gorilla is the equivalent of eating your neighbors child. We as an organization are supporting the anti-bush meat initiative currently being discussed in Washington. For those of you would like to receive more information on this subject please contact us.

Now that the rains are easing, we are doing the necessary repairs in anticipation of the rush of groups due in the coming months. Your generosity would help us greatly, so I ask and urge you to consider a donation at this time. No amount is too small and as you know all of it goes to the work with nothing spent on our overhead, so it goes a long way in ensuring the vital continuation of our work.

Thank you.

Warmest Regards,

Stefanie Powers

News From Kenya:

On Feb. 15, a bongo exhibit was held at the Nairobi Safari Walk. As a result of this event, two male bongos from the Mt. Kenya Game Ranch will be on loan to the Nairobi National Park. After assessing the adaptability of the animals to their new habitat, one male may be exchanged for a female to initiate a pilot breeding program.



NGENIA SECONDARY SCHOOL TRIP TO MOUNT KENYA

This first hand view of the results of human exploitation and domestic animal grazing impacting on the environment made a dramatic impression and was accompanied by lectures concerning over-grazing, deforestation and desertification.



FOOT AND MOUTH OUTBREAK IN NANYUKI

Foot and mouth disease (FMD) is a viral disease affecting bovines, swines and other ungulates with split hooves. It is also called the hoof and mouth disease but unlike the description the disease affects the soft tissue around the hooves rather than the actual hoof.

The disease is transmitted through contaminated body fluids like saliva, especially where the animals share pasture. Drop-pings or urine from an infected animal will also expose the healthy animal to the disease. Animals that are themselves not affected by the virus, for example, cattle and egrets, are potential carriers of the disease. Somebody who walked through a field of contaminated pasture and later stepped into a shed with healthy animals also exposes those animals to the risk of infection. The disease does not affect human beings. Viral diseases are very selective in the groups of plants or animals they infect. The virus causing foot and mouth is in a family of viruses called picornavirus and the receptor sites in humans do not respond to this kind of virus.

The virus will incubate in a newly infected cow for two to six days in the pharynx. Some animals like buffaloes are able to incubate the virus for years without showing full-blown effects until such time when their immunity is low. An infected animal will develop blisters on the mouth and around the muzzle. Lesions develop on the tissues between the hooves and as a result the animal will not be able to eat, drink or walk which makes it grow thin and weak. The animal develops a fever and in extreme cases the virus affects the heart at which point the animal will easily die. In female animals, the infection can pass to the mammary glands making them swell and cutting down on their milk production. On the whole, the disease is rarely fatal and only about 10% of the infected animals die from it. The animal is more likely to

die from inability to feed rather than from the said symptoms.

Like all other viral diseases, foot and mouth is not curable and at best the veterinary medic only tries to improve the condition of the animal by treating the symptoms. Even in human beings we are only able to improve the condition of a patient suffering from a viral infection like measles, influenza and the common cold to name a few. Local farmers tend to use salt to wash the sores on the hooves and mouth whereby the salt disinfects the wounds. Animals are immunized to prevent infection but this has to be as regular as two months to prevent infection and even in some of these cases there has been incidents of immunized animals succumbing to the disease.

Economic loss from this infection arises due to the productivity loss of the animal. Milk production goes down and in the case of beef cattle the animal loses a lot of weight. FMD puts a lot of additional stress to the farmer as he tries to quarantine the infected animals.

In Nanyuki the outbreak this year was brought on by the inflows of herds from the Laikipia Plains and parts of Northern Kenya. There was no veterinary check-up of these incoming herds. FMD was noticed in less than two weeks since the arrival of the new herds.

Wildlife species like buffalo, elands, impalas and wildebeests are a reserve pool for the virus. Buffaloes can incubate the virus for over 28 months without vesicular lesions or any other visible symptom. In areas where there is close contact between game and cattle such buffaloes will readily pass the virus to the cattle. However, buffaloes have a better immunity against the virus. The effect of the virus on other species like the eland is yet to be researched and the interrelationship of such infections with livestock established.

DUNK THE DROUGHT

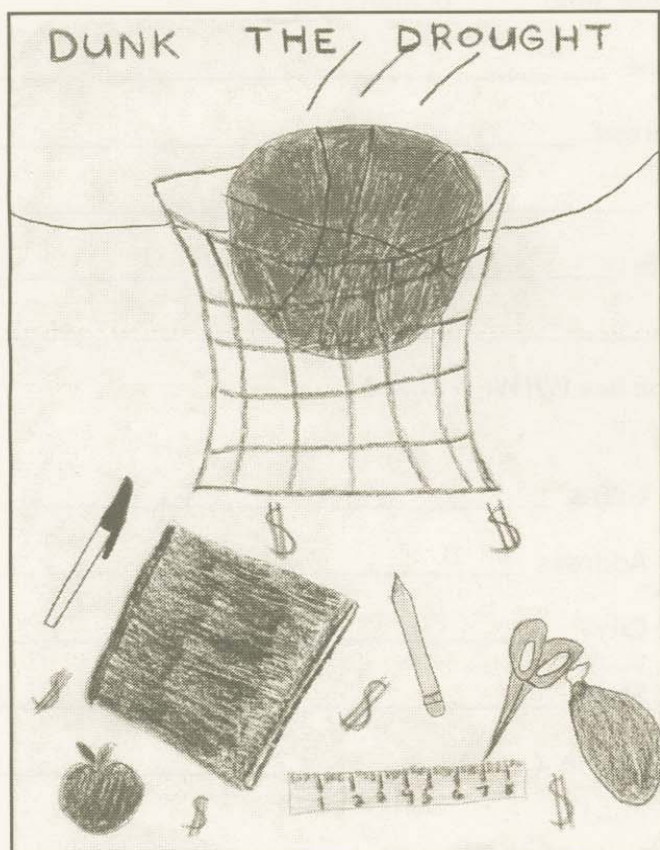
Fund-Raising by the Vernon Center Middle School

Our sincere gratitude to Susan Bruckner and her seventh grade class for their support to our work. We hope everyone will enjoy reading this article.

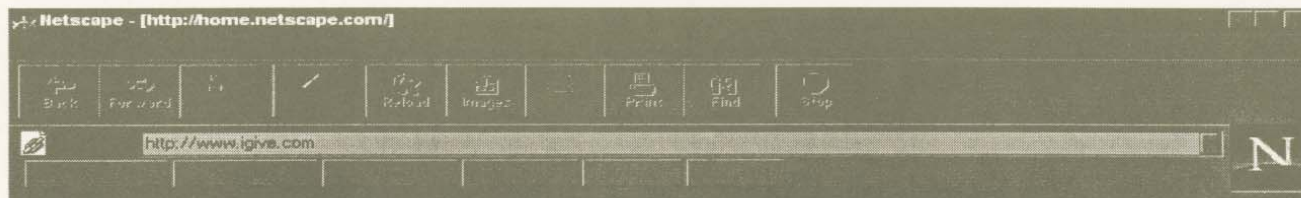
My seventh graders are having a wonderful year corresponding with their pen pals at Nyariginu Primary School. As we started the program this year, we discussed your proposal to help the students and families who have been affected by the drought conditions. As the class learned more about Kenya and the difficulties their new friends are facing, they became quite concerned and eager to help. After a bit of brainstorming, they

came up with the idea to have a 'Dunk the Drought' basketball shoot-a-thon. They planned the whole event, from writing persuasive essays to figuring out how many baskets to set to organizing themselves into shooters and recorders. Their fundraising goal was \$451—one dollar over last year's class! As you can see by the enclosed check for \$1045, they more than doubled their expectations. They worked enthusiastically and passionately throughout the project and are so pleased and proud, as I am, to know they are making a difference in the lives of others.

Susan Bruckner
7th Grade Teacher



LEFT: A drawing submitted and signed by all the 7th grade students. ABOVE: A photo taken of the students at their basketball-a-thon fundraising event.



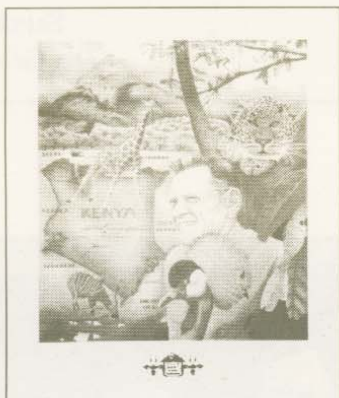
The William Holden Wildlife Foundation is listed as a non-profit organization on a unique new website called iGive.com. iGive.com (www.igive.com) provides online shoppers an e-commerce portal with a twist — visitors can make donations to their favorite charities while they're buying items over the Internet everyday.

The iGive.com website contributes \$10.00 to the selected charity on behalf of each new registered shopper. An additional percentage, up to 15%, will be given to those charities on all purchases by each registered shopper at affiliated

merchants. Among the 80 merchants currently working with iGive.com to increase charitable contributions are Reel.com, CDNow, 800.com, eToys, J. Crew and J.C. Penny.

We invite all WHWF supporters who are on-line to visit to visit iGive.com, become registered shoppers and consider making your online purchases at this unique website.

Additionally, check the WHWF web site for a listing of additional on-line shopping outlets where you can make your purchase while also supporting our endeavors.



Posters are \$18.00 each (\$15.00 plus \$3.00 postage.)
Please send check or money order to:

WILLIAM HOLDEN WILDLIFE FOUNDATION
Post Office Box 67981, Los Angeles, CA 90067

Please send _____ poster(s) to:

Name _____

Address _____

City _____

State _____ Zip Code _____

Just a reminder ... the Foundation has WHWF t-shirts!

T-shirts are \$12.00 each (\$10.00 plus \$2.00 postage).
Please send your check or money order to:

WILLIAM HOLDEN WILDLIFE FOUNDATION
Post Office Box 67981, Los Angeles, CA 90067

Please circle color, and indicate size and quantity below:

White Powder Blue Safari Green Black

Small _____ Medium _____

Large _____ Extra Large _____

Name _____

Address _____

City _____

State _____ Zip Code _____

Phone () _____